



ExamKiller.net
World's NO.1 IT Certification Website

Pass Any IT Exam At First Try . No Pass No Pay! www.examkiller.net

<input type="checkbox"/> MCSE	<input type="checkbox"/> CCNA	<input type="checkbox"/> CCNP	<input type="checkbox"/> HP	<input type="checkbox"/> Oracle 10i
<input type="checkbox"/> Apple	<input type="checkbox"/> BEA	<input type="checkbox"/> IBM	<input type="checkbox"/> Nortel	<input type="checkbox"/> Symantec

Exam Questions

Online Test Engine

Study Guide

Audio Training

CATEGORIES

Hot Vendor: Cisco Microsoft Oracle Avaya Altiris Apple IBM Nortel RSA Veritas Business Objects EMC Juniper

ExamKiller Inc.
Exam Questions Features

Based on the Real Exam Questions. Exhibits, Drag&Drop and Simulation Questions Included.

Study Guides are Constantly Updated To Reflect Current Exam Information!

Technical support available to answer your technical questions and queries.

Study Guides are provided in the universally accepted Adobe PDF format. No installation and no viruses. Easy to read and print.

Free 3 months Updates. No risk, 100% Money Back Guarantee.

IBM 000-012

IBM Tivoli Usage & Accounting Manager V7.1 Implementation

Practice Questions and Answers

By: ExamKiller Inc.

www.examkiller.net | support@examkiller.net

PLEASE READ:

ExamKiller's Industrious professionals have carefully designed and compiled this Practice Q&A for you. This Q&A aims at bringing the in-line ideas and concepts behind every question. It is better than other Practice Q&A because it's based in the Real Test Center. The answers to each question in this Q&A are not only exact and accurate but are verified as well. Some Q&A has explanations given in. They are written by the best people in industry enhancing your knowledge and learning experience. Instead of memorizing, our Q&A is made to make you understand things. You can read it a couple of times to increase your speed of exam attempt and comprehension.

All of our Q&As are updated regularly with changing exam objectives so keep an eye on the latest version of this Q&A to get the most updated and most accurate Q&A in line with the latest Exam objectives.

We welcome all your suggestions regarding this Q&A which can help us make this better for you. Please note down that the copy of this Q&A delivered by ExamKiller is only for your personal use and not for distribution. This Q&A is protected by US Copyright laws and any violation found may be dealt with legal action.

We thank you again for buying this Q&A product from us and we promise to continue serving you in future for all your Certification Training needs.

Promising your success,

ExamKiller

Technical Support Team

SessionA: 51 Questions

SessionB: 51 Questions

SessionA

1. A customer wants to collect usage information for various types of databases in their environment. What are two database types for which a collector is provided with in the IBM Tivoli Usage and Accounting Manager V7.1 Enterprise Collector Pack? (Choose two)

- A. DB2
- B. MySQL
- C. Informix
- D. Oracle
- E. Sybase

Answer: A D

2. What is the most efficient way to keep the size of a database controlled?

- A. use IBM Tivoli Usage and Accounting Manager V7.1 (TUAM) archiving and TUAM dbpurge job
- B. use TUAM archiving and database deletion
- C. use database functions for archiving and deletion
- D. use archiving from the database and TUAM dbpurge job

Answer: D

3. What are the minimum requirements for processor speed and memory for the IBM Tivoli Usage and Accounting Manager V7.1 Administration Server?

- A. 3 GHz, 2 GB
- B. 3 GHz, 3 GB
- C. 3 GHz, 4 GB
- D. 4 GHz, 3 GB

Answer: A

4. Which report provides charges by account code, rate group, and rate code description for the parameters selected?

- A. DB2 Summary Report
- B. Invoice with Budget Report
- C. Invoices by Account Level Report
- D. Detail Rate Group/Identifier Report

Answer: C

5. If an IBM Tivoli Usage and Accounting Manager V7.1 Windows Disk data collector is installed, which identifier should be used to derive an account code?

- A. User
- B. Folder
- C. Server
- D. Mount Point

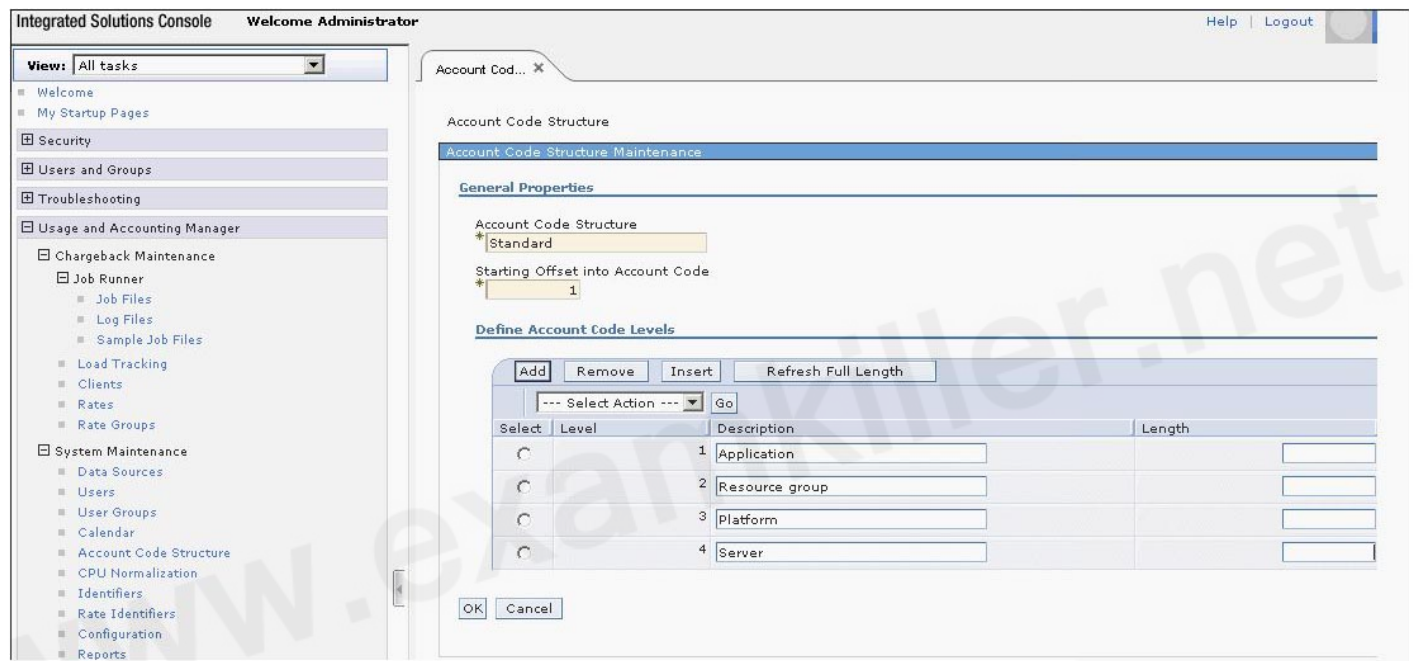
Answer: B

6. A customer wants to use DB2 on Linux for the IBM Tivoli Usage and Accounting Manager V7.1 (TUAM) database. The database has been created using a UTF-8 format. Which two steps must be performed before initializing the database? (Choose two)

- A. create a buffer pool for the database
- B. disable TUAM access to the database
- C. define stored procedures used to initialize the database
- D. go to TUAM Integrated Solutions Console System Maintenance->Database->Table Manager panel to create database tables

Answer: A D

7. Click the Exhibit button



Consider the following account code:

AAABBBBCCCCDD

Which length values would be filled in the Account Code Structure Maintenance shown in the exhibit if there were four levels?

- A. 3,4,5,2
- B. 2,5,4,3
- C. 4,3,2,5
- D. 3,7,11,13

Answer: A

8. In the IBM Tivoli Usage and Accounting Manager V7.1 Integrated Solutions Console, where can it be verified that the sample data has been processed?

- A. Rate Table
- B. Sample Jobs
- C. Rate Groups
- D. Load Tracking

Answer: D

9. In the Configuration tab, what must a user select in order to reach the job logs files path?

- A. Drivers
- B. Logging
- C. Reporting
- D. Processing

Answer: D

10. What must be downloaded and installed in the Integrated Solutions Console in order to create and connect to the IBM Tivoli Usage and Accounting Manager V7.1 database?

- A. WebSphere
- B. database driver
- C. Enterprise Edition Pack
- D. Enterprise Collector Pack

Answer: B

11. To verify the installation and check sample collector data loads in Load Tracking, each load will be composed of which files?

- A. only Summary, Detail, Ident
- B. only Summary, Detail, Ident, Rates
- C. only Summary, Detail, Ident, Resource
- D. Summary, Detail, Ident, Resource, Rates

Answer: A

12. When creating a new rate code using the IBM Tivoli Usage and Accounting Manager V7.1 Integrated Solutions Console, in which section should the rate value be entered on the Rate Maintenance panel?

- A. Rates
- B. Rate Shifts
- C. General Properties
- D. Resource Conversion

Answer: C

13. What is the maximum number of account code levels that can be assigned?

- A. 8
- B. 96
- C. 127
- D. unlimited

Answer: C

14. Where are the user access rights to the IBM Tivoli Usage and Accounting Manager V7.1 web-based reports assigned?

- A. System Maintenance-> Users
- B. Users and Groups->Manage Users