



ExamKiller.net
World's NO.1 IT Certification Website

Pass Any IT Exam At First Try . No Pass No Pay! www.examkiller.net

<input type="checkbox"/> MCSE	<input type="checkbox"/> CCNA	<input type="checkbox"/> CCNP	<input type="checkbox"/> HP	<input type="checkbox"/> Oracle 10i
<input type="checkbox"/> Apple	<input type="checkbox"/> BEA	<input type="checkbox"/> IBM	<input type="checkbox"/> Nortel	<input type="checkbox"/> Symantec

Exam Questions

Online Test Engine

Study Guide

Audio Training

CATEGORIES

Hot Vendor: Cisco Microsoft Oracle Avaya Altiris Apple IBM Nortel RSA Veritas Business Objects EMC Juniper

ExamKiller Inc.

Exam Questions Features

Based on the Real Exam Questions. Exhibits, Drag&Drop and Simulation Questions Included.

Study Guides are Constantly Updated To Reflect Current Exam Information!

Technical support available to answer your technical questions and queries.

Study Guides are provided in the universally accepted Adobe PDF format. No installation and no viruses. Easy to read and print.

Free 3 months Updates. No risk, 100% Money Back Guarantee.

Cisco 642-359

Implementing Cisco Storage Network Solutions

Practice Questions and Answers

By: ExamKiller Inc.

www.examkiller.net | support@examkiller.net

PLEASE READ:

ExamKiller's Industrious professionals have carefully designed and compiled this Practice Q&A for you. This Q&A aims at bringing the in-line ideas and concepts behind every question. It is better than other Practice Q&A because it's based in the Real Test Center. The answers to each question in this Q&A are not only exact and accurate but are verified as well. Some Q&A has explanations given in. They are written by the best people in industry enhancing your knowledge and learning experience. Instead of memorizing, our Q&A is made to make you understand things. You can read it a couple of times to increase your speed of exam attempt and comprehension.

All of our Q&As are updated regularly with changing exam objectives so keep an eye on the latest version of this Q&A to get the most updated and most accurate Q&A in line with the latest Exam objectives.

We welcome all your suggestions regarding this Q&A which can help us make this better for you. Please note down that the copy of this Q&A delivered by ExamKiller is only for your personal use and not for distribution. This Q&A is protected by US Copyright laws and any violation found may be dealt with legal action.

We thank you again for buying this Q&A product from us and we promise to continue serving you in future for all your Certification Training needs.

Promising your success,

ExamKiller

Technical Support Team

Session: 75 Questions

1: As which two options can an RMON event manifest itself? (Choose two.)

- A.log entry
- B.email message
- C.SNMP trap
- D.script action
- E.alarm

Correct Answer: A C

2: You have connected the Cisco MDS 9222i Switch to the existing Brocade SAN fabric which consists of five 32-port Brocade switches. You have selected interoperability mode 3, created VSAN 10 that operates in that interoperability mode, and configured the fc1/1 interface that is connected to the Brocade as an E_port. The connectivity is still broken. Which option should you apply to fix the connectivity?

- A.Change the interoperability mode to 0.
- B.Restart the Brocade switch for the interoperability mode to work.
- C.Set BB_credits on the MDS 9222i fc1/1 interface to 16.
- D.Deploy static DomainID using values from 1 to 31.

Correct Answer: C

3: With regards to FCIP encapsulation, which statement is true?

- A.The Fibre Channel frame is encapsulated into an IP packet.
- B.The Fibre Channel frame is encapsulated into an MPLS packet.
- C.The Fibre Channel frame is encapsulated into an Ethernet frame.
- D.The Fibre Channel frame is encapsulated into an iSCSI packet.

Correct Answer: A

4: Which two Cisco MDS 9000 Series Switches are used in small- and medium-sized SAN topologies? (Choose two.)

A. Cisco MDS 9124

B. Cisco MDS 9222i

C. Cisco MDS 9506

D. Cisco MDS 9509

E. Cisco MDS 9513

Correct Answer: A B

5: Refer to the exhibit. When looking at the Cisco Fabric Manager, you notice that one of the switches has this symbol superimposed on it. What is the reason?

A. The device is manageable but there are operational problems.

B. The device is online but not working properly.

C. The device is not manageable.

D. The device is down.

Correct Answer: D

6: What are four valid protocols for copying software to the MDS 9000 family switches? (Choose four.)

A. Remote Copy Service

B. Secure Copy Protocol

C. Trivial File Transfer Protocol

D. File Transfer Protocol

E. Secure Trivial File Transfer Protocol

F. Secure File Transfer Protocol

Correct Answer: B C D F

7: Choose the correct list of tasks to configure Remote Spanning.

A.

- Create a VSAN interface.
- Enable a Fibre Channel tunnel.
- Initiate the Fibre Channel tunnel.
- Configure the ST_Port in the source switch.
- Configure the SD_Port in the destination switch.
- Configure a SPAN session in the source switch.

B.

- Create a VSAN interface.
- Enable a Fibre Channel tunnel.
- Initiate the Fibre Channel tunnel.
- Configure the ST_Port in the source switch.
- Configure the SD_Port in the destination switch.
- Configure an RSPAN session in the source switch.

C.

- Create an RSPAN interface.
- Enable a Fibre Channel tunnel.
- Initiate the Fibre Channel tunnel.
- Configure the SD_Port in the destination switch.
- Configure the ST_Port in the source switch.
- Configure an RSPAN session in the source switch.

D.

- Create a VSAN interface.
- Enable a Fibre Channel tunnel.
- Initiate the Fibre Channel tunnel.
- Configure the ST_Port in the destination switch.
- Configure the SD_Port in the source switch.
- Configure an RSPAN session in the source switch.

Correct Answer: B

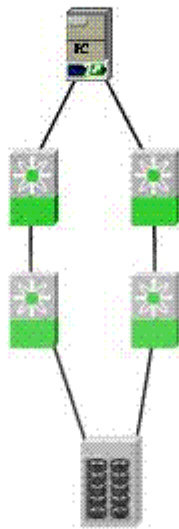
8: When large Fibre Channel frames must be sent from an MSM 18/4 module at the central site to the

remote offices, what is the consequence of disabling the Path MTU Discovery and using the default Ethernet MTU?

- A. Packet shaping becomes effective.
- B. Minimum retransmission interval is prolonged.
- C. Jumbo frames are enabled.
- D. Large Fibre Channel frames are fragmented.

Correct Answer: D

9: Refer to the exhibit. The customer's ISL links are flapping and seem to go down every few days. While troubleshooting the problem, they determine that the speed of failover to the redundant path is taking too long. What is the recommended solution to the problem, involving turning on a feature?



- A. use port tracking
- B. disable the flapping ISL
- C. use port channel
- D. adjust FSPF link costs

Correct Answer: A

10: A host is unable to access the storage network after its HBA is replaced. Which of these switch configurations could be preventing access?

- A. port-based zoning
- B. port-mode security
- C. port security
- D. port VSAN membership

Correct Answer: C

11: Drag Drop

Drag the Cisco analysis tool on the left to its appropriate description on the right.

Switch Health Analysis

determines if switches will connect successfully without fabric isolation due to mismatched port membership

Fabric Configuration Analysis

compares the configurations of all Cisco MDS switches in a fabric to a reference switch or a policy file

End-to-End Connectivity

runs an in-depth switch analysis with Fabric Manager, verifying status of all critical MDS system, module, port, and Fibre Channel services

Zone Merge Analysis

utilizes FC Ping to verify interconnections between Cisco MDS switches and end-device (HBAs and storage devices) in a particular VSAN

12: You have deployed a Fibre Channel network with iSCSI-attached servers and clients in multiple IP networks. In your Fibre Channel network, you have deployed a Cisco MDS 9222i switch as an iSCSI gateway. Which option prevents clients from attaching to different iSCSI virtual targets that are used by the servers?

- A. Use iSCSI proxy initiator mode on Gigabit Ethernet interfaces for the server side.
- B. Deploy static iSCSI initiator maps and attach them to Gigabit Ethernet interfaces.